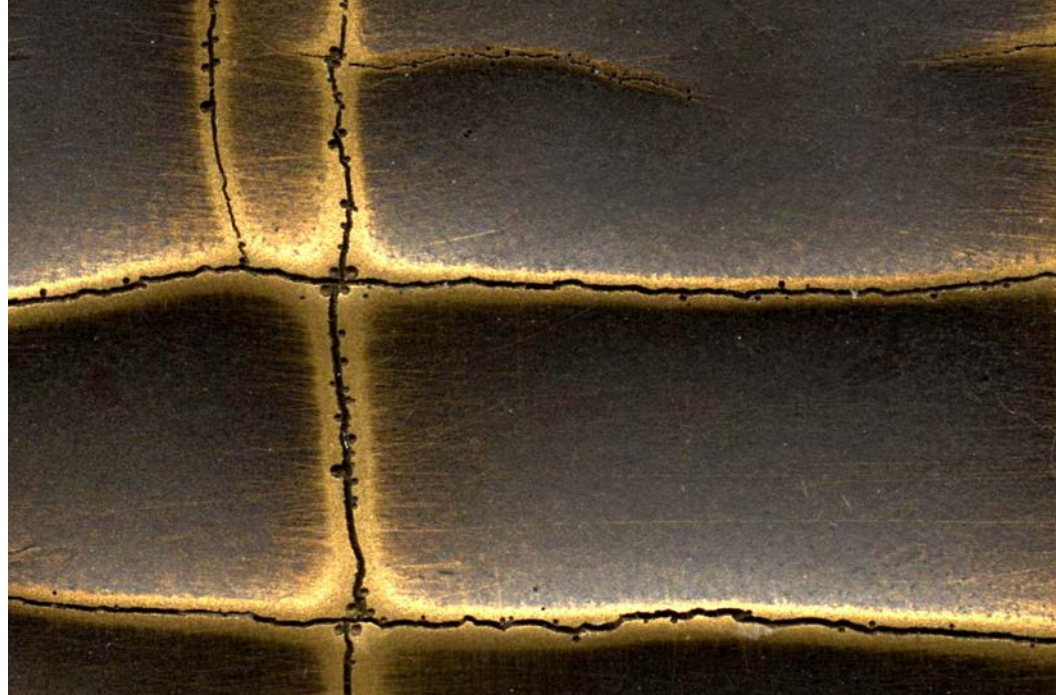
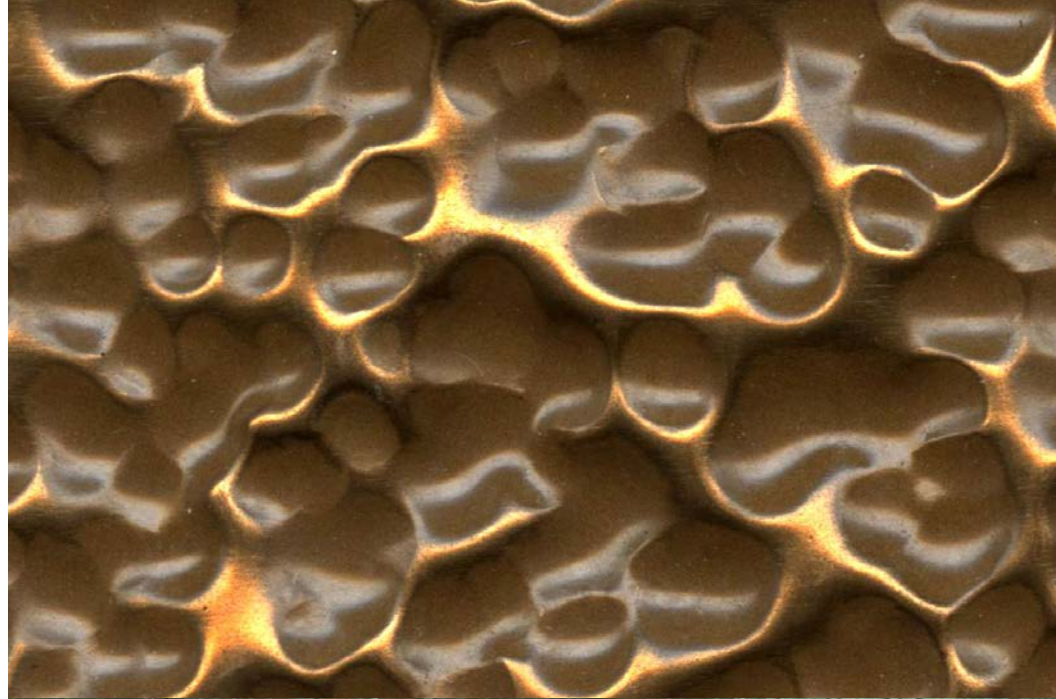


ERIC  
BRAND

Liquid Metals







we are here to help realize  
your liquid metal dreams

## Liquid Metal Q&A

### Standard Liquid Metal Finishes:

Q: What is the largest panel size of a liquid metal finish that can be produced?

A: The largest panel size that can be made is 48" x 118".

Q: Are there any limitations to shape or size? And can these finishes be made to look seamless?

A: The following standard finishes are a sprayed finish and have no limitations on size, have no MOQ, and can be applied on flat, curved, or irregular surfaces with no seams:

ME-22 deep bronze

ME-23 bronze – concrete

ME-24 white bronze – stained

ME-33 bronze – organic grid

ME-34 bronze – traction

ME-46 white bronze – concrete

All other standard finishes are made in panels with an MOQ sheet size of 48"x 96" and can only be applied on flat surfaces.

Q: What is the lead time for samples and production?

A: The lead time for samples is 3 weeks. To determine production lead time, please contact your Eric Brand representative with project details.

### Custom Liquid Metal Finishes:

Q: Can custom designs for liquid metal finishes be made?

A: Yes, we will work closely with you to produce a unique, one-of-a-kind finish.

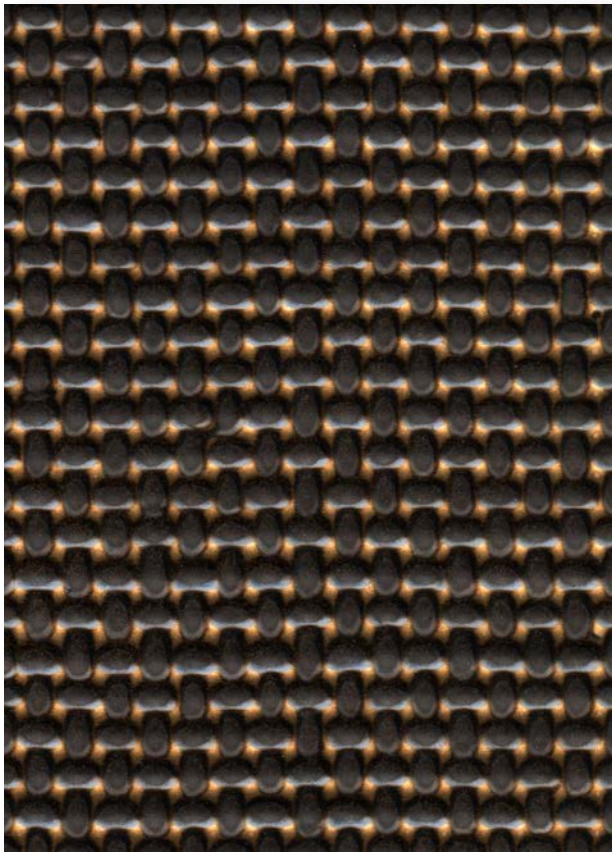
Q: What is the MOQ for producing a customized finish?

A: A single sheet (48" x 96") is the standard MOQ for producing a customized finish, however this is subject to change based on each order.

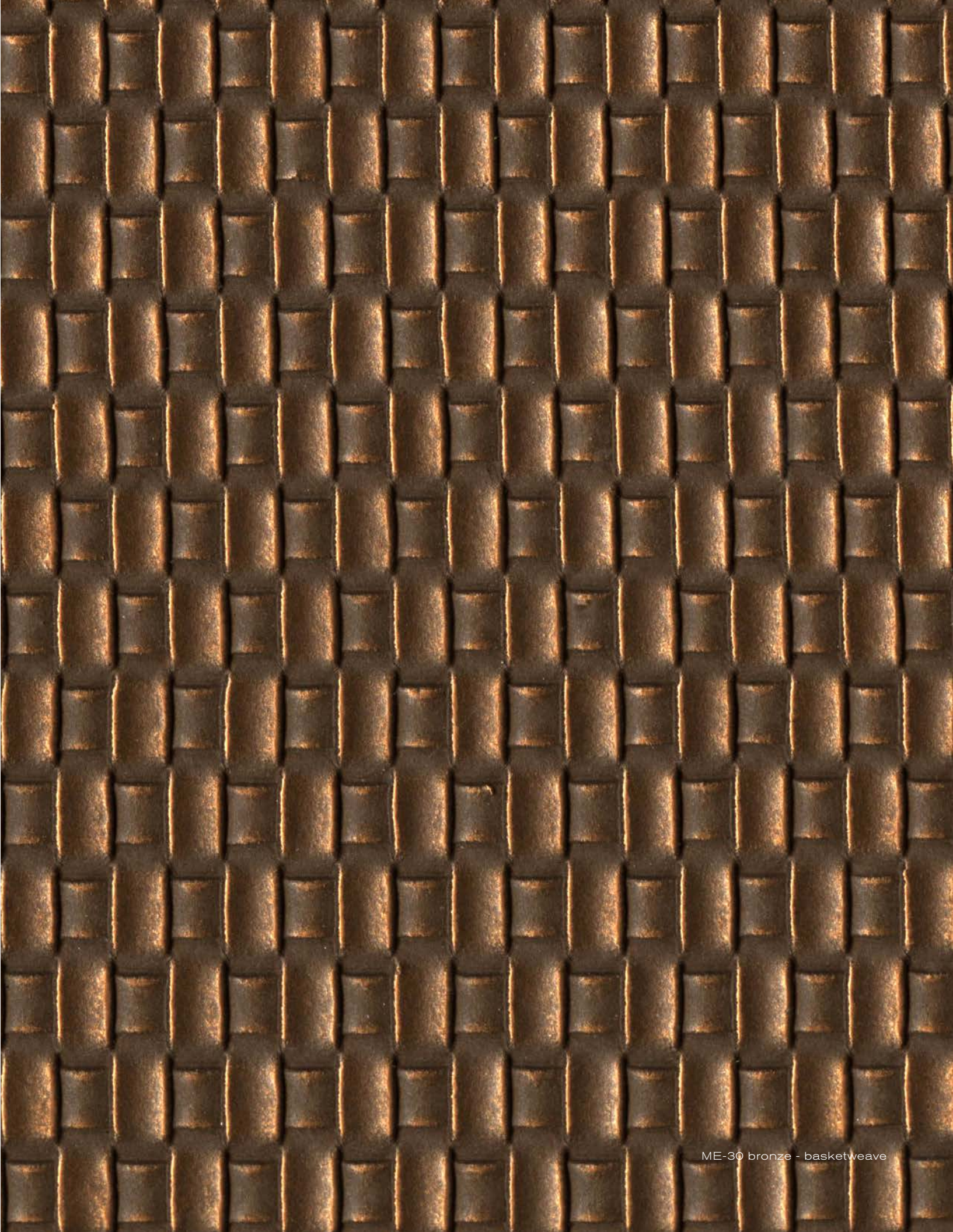
Q: What kind of files are required when creating a custom piece of furniture or panel?

A: Providing the CAD files is ideal; however, we can help develop the drawings if needed for an added charge, which is based on the complexity of the design.

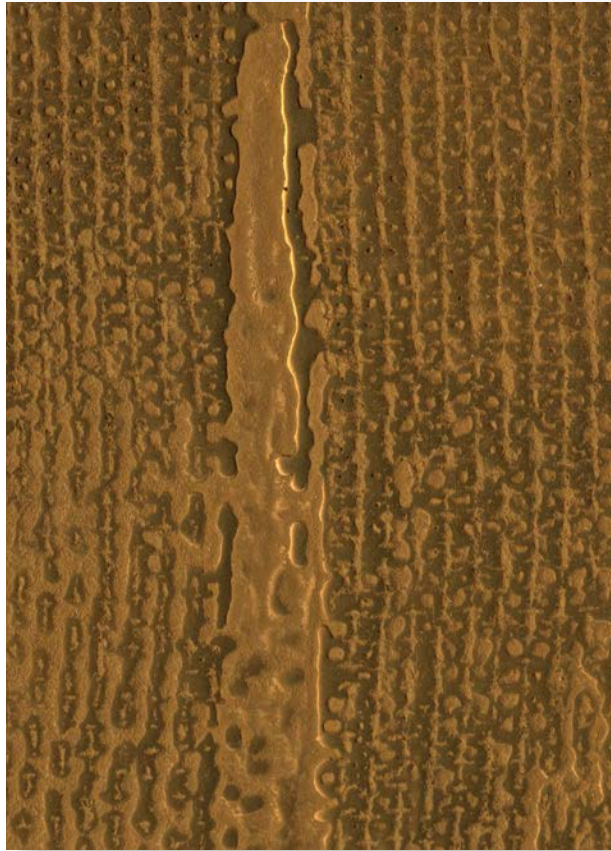




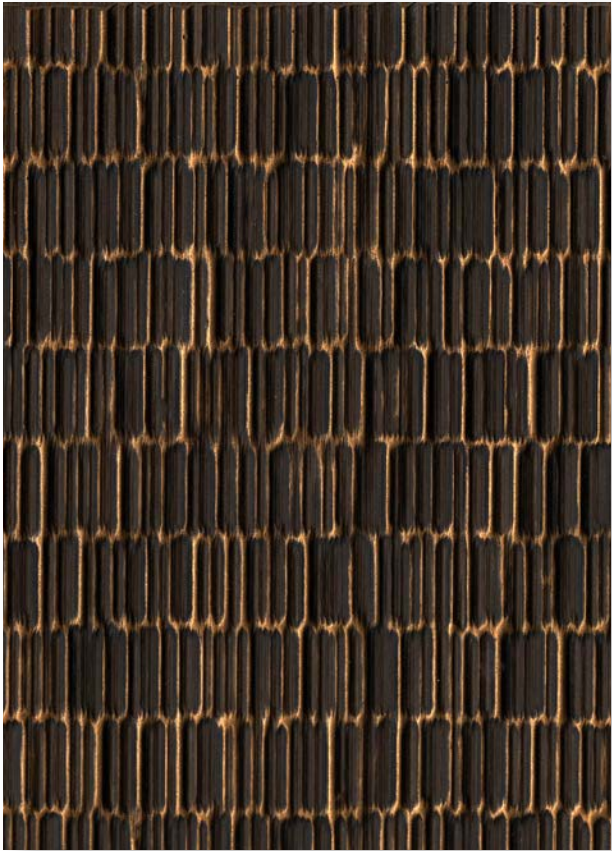
ME-41 dark bronze - inverse basketweave



ME-30 bronze - basketweave

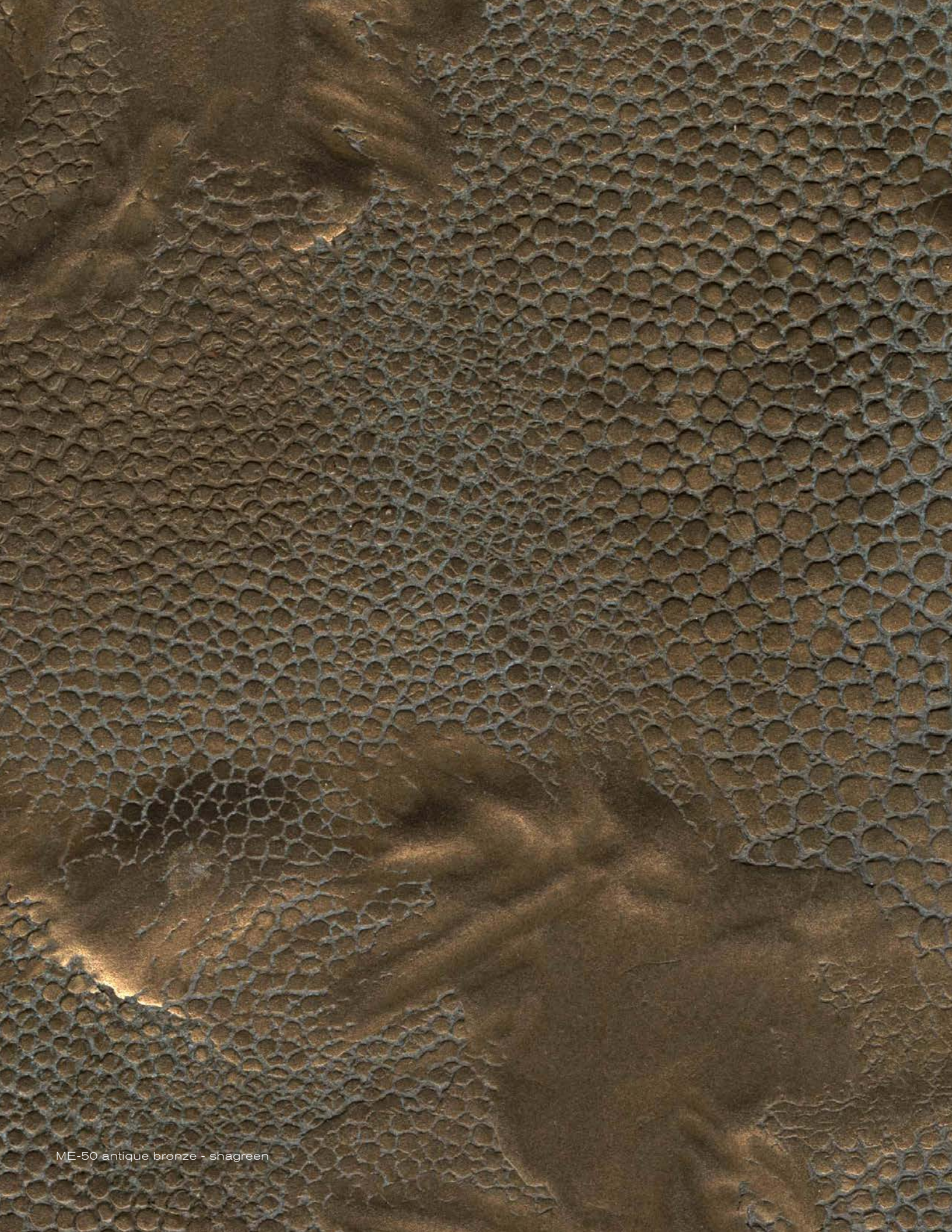


ME-34 bronze - traction



ME-40 dark bronze - traction





ME-50 antique bronze - shagreen



ME-23 bronze - concrete



ME-46 white bronze - concrete



ME-24 white bronze - stained





Washington Marriott Wardman Park Hotel, Washington, DC  
Designer: Carmel Partners  
Purchaser: Potomac Millwork  
Reception desk realized by Eric Brand

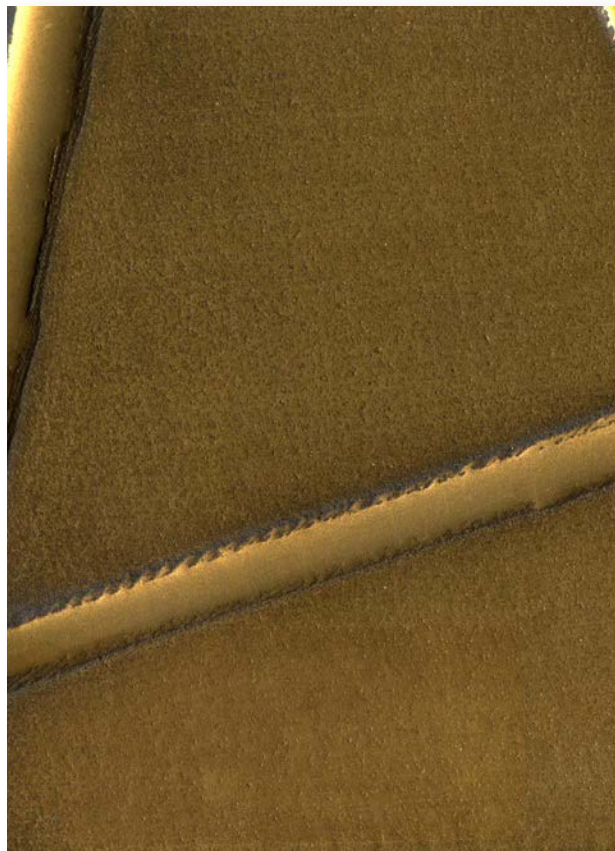




ME-42 white bronze - wood grain



ME-27 bronze - wood grain



ME-37 brass - branches



ME-43 brass - wood grain

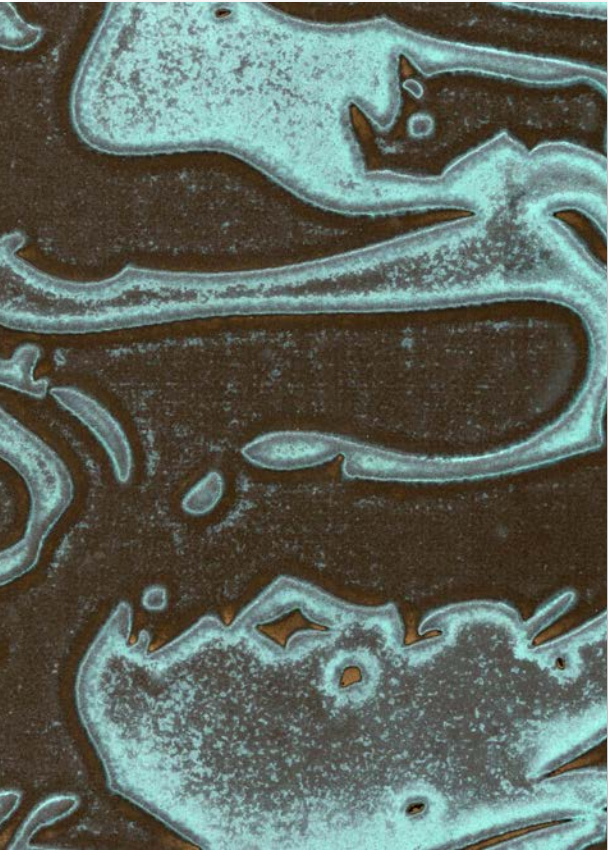




ME-48 dark bronze - swirled



ME-26 bronze - wavy



ME-53 antique bronze - blue - abstract



ME-28 bronze - ornate

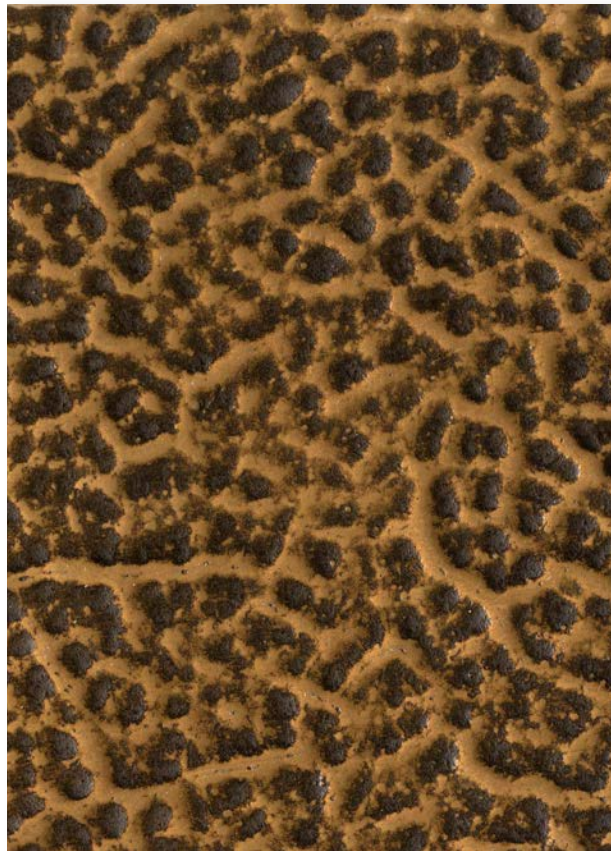




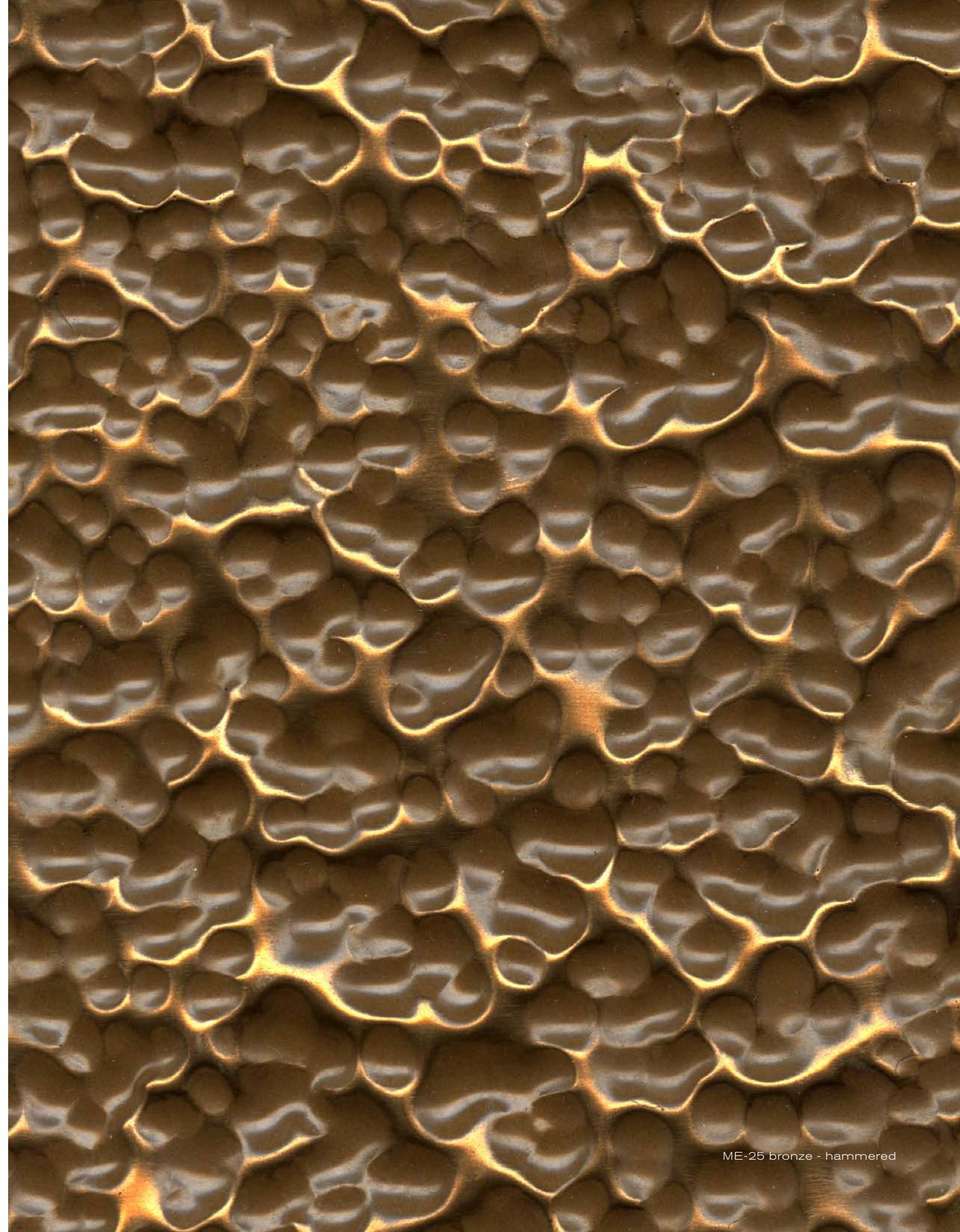
ME-21 bronze - carved



ME-47 dark bronze - hammered



ME-32 bronze - organic dimpling



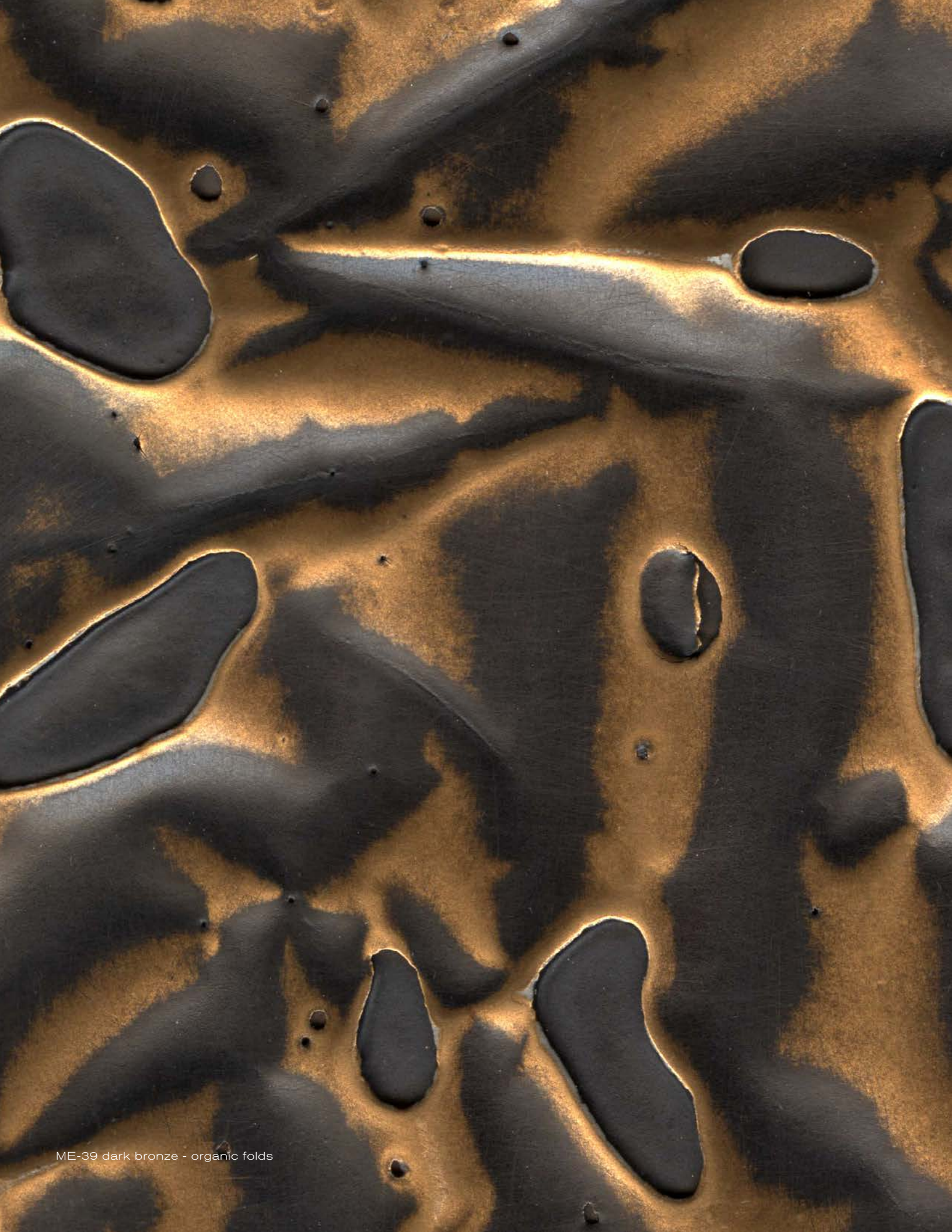
ME-25 bronze - hammered



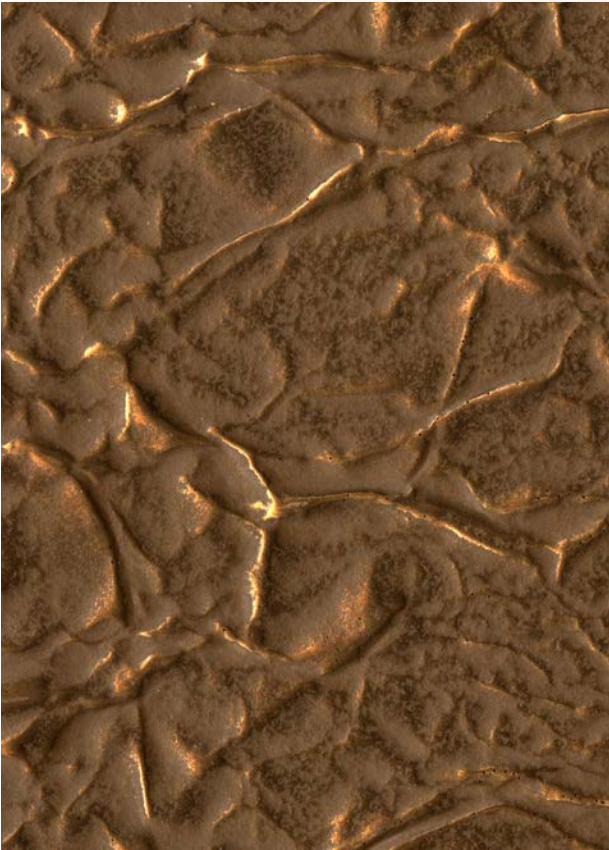


Sphere Occasional Table / OT-120  
Designed by Eric Brand

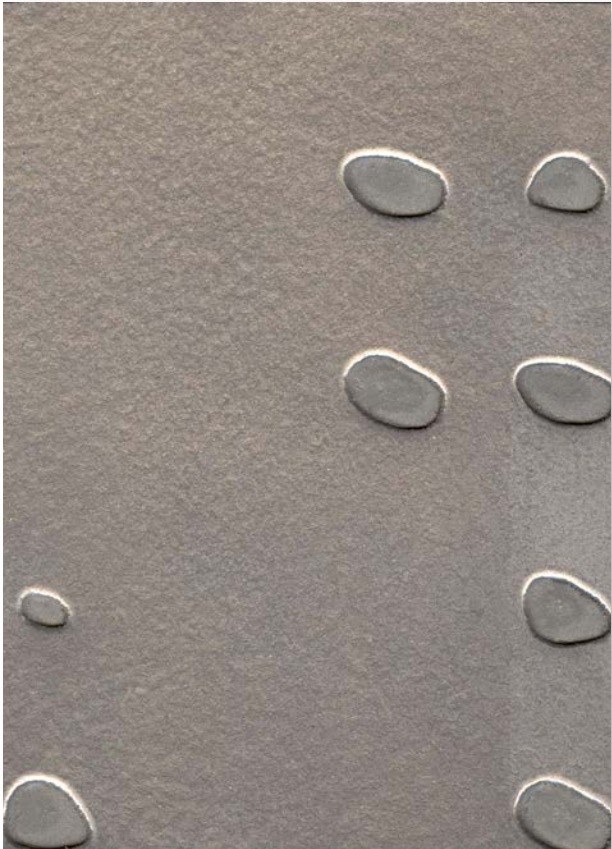




ME-39 dark bronze - organic folds



ME-29 antique bronze - crumpled

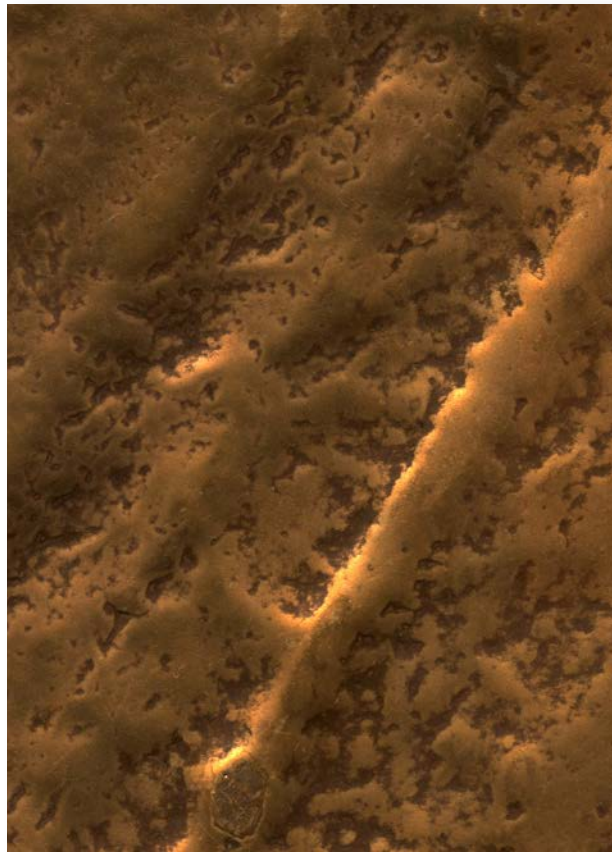


ME-51 bronze - silver - droplets

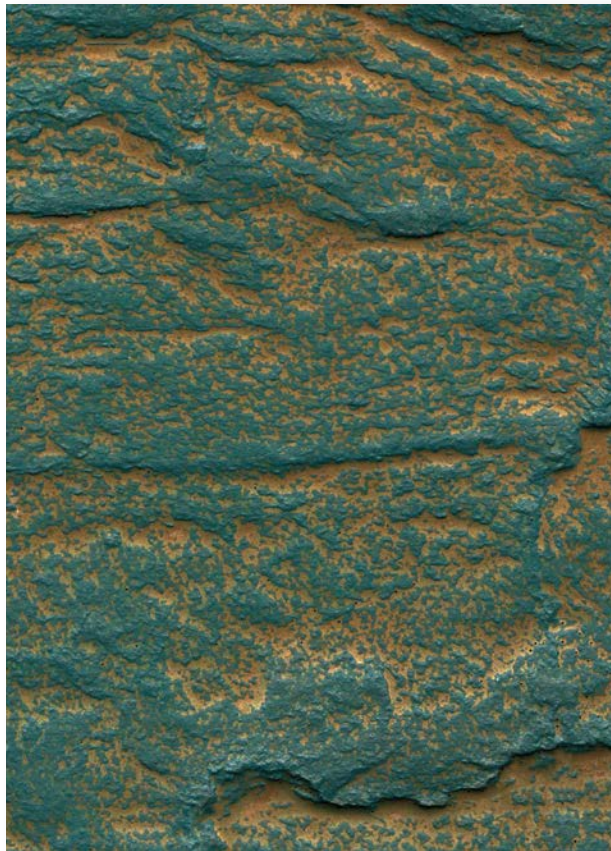


ME-22 deep bronze

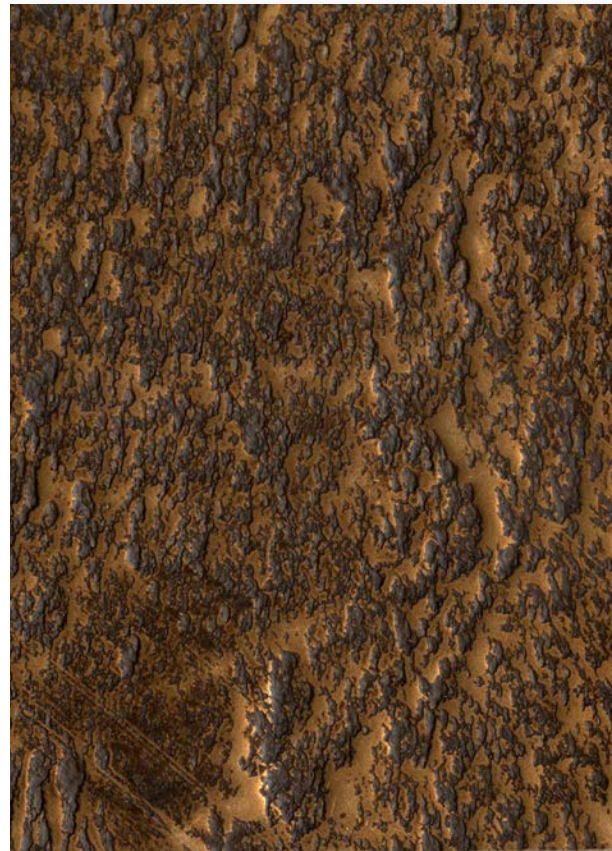




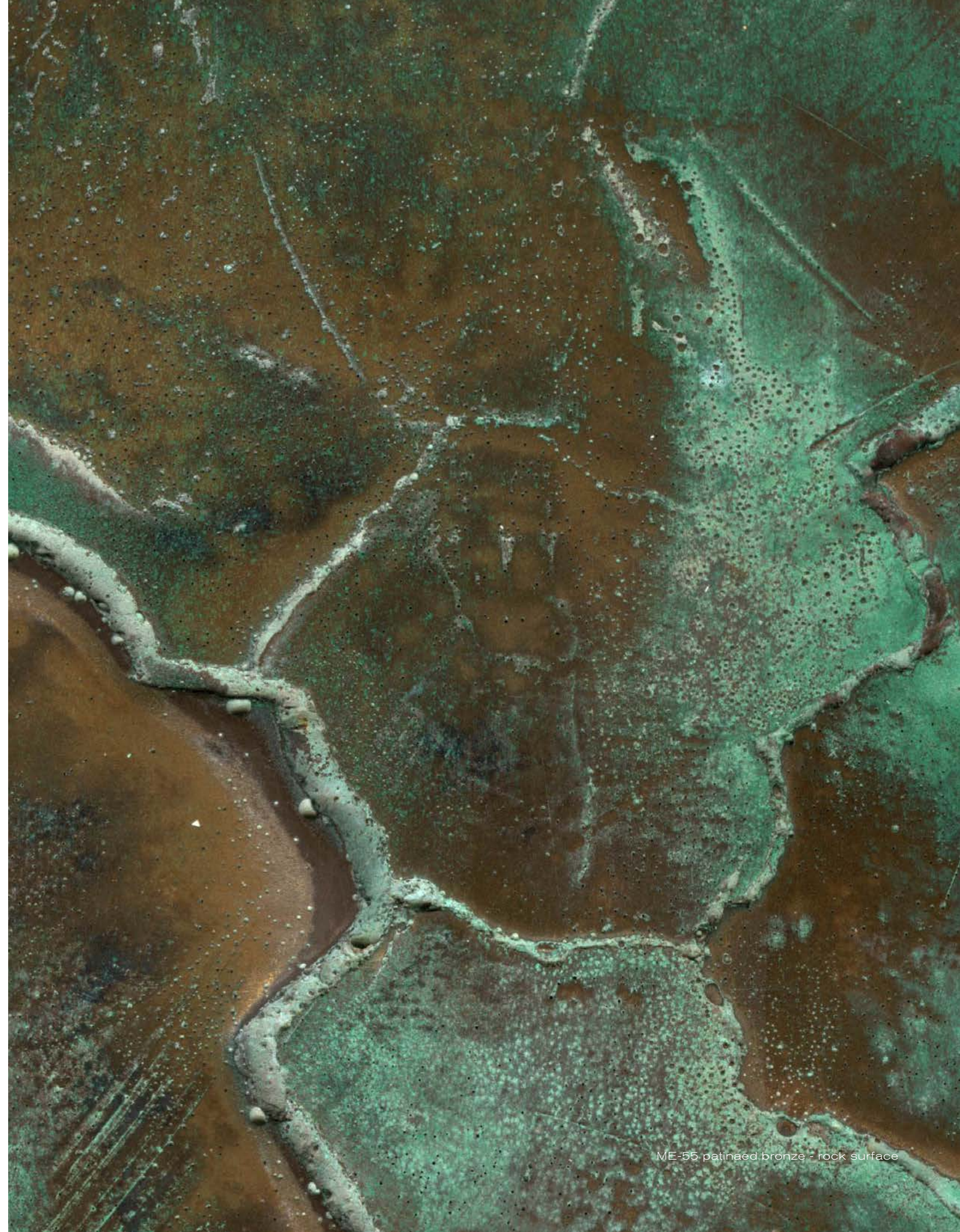
ME-35 bronze - rock surface



ME-56 bronze - green - rock surface

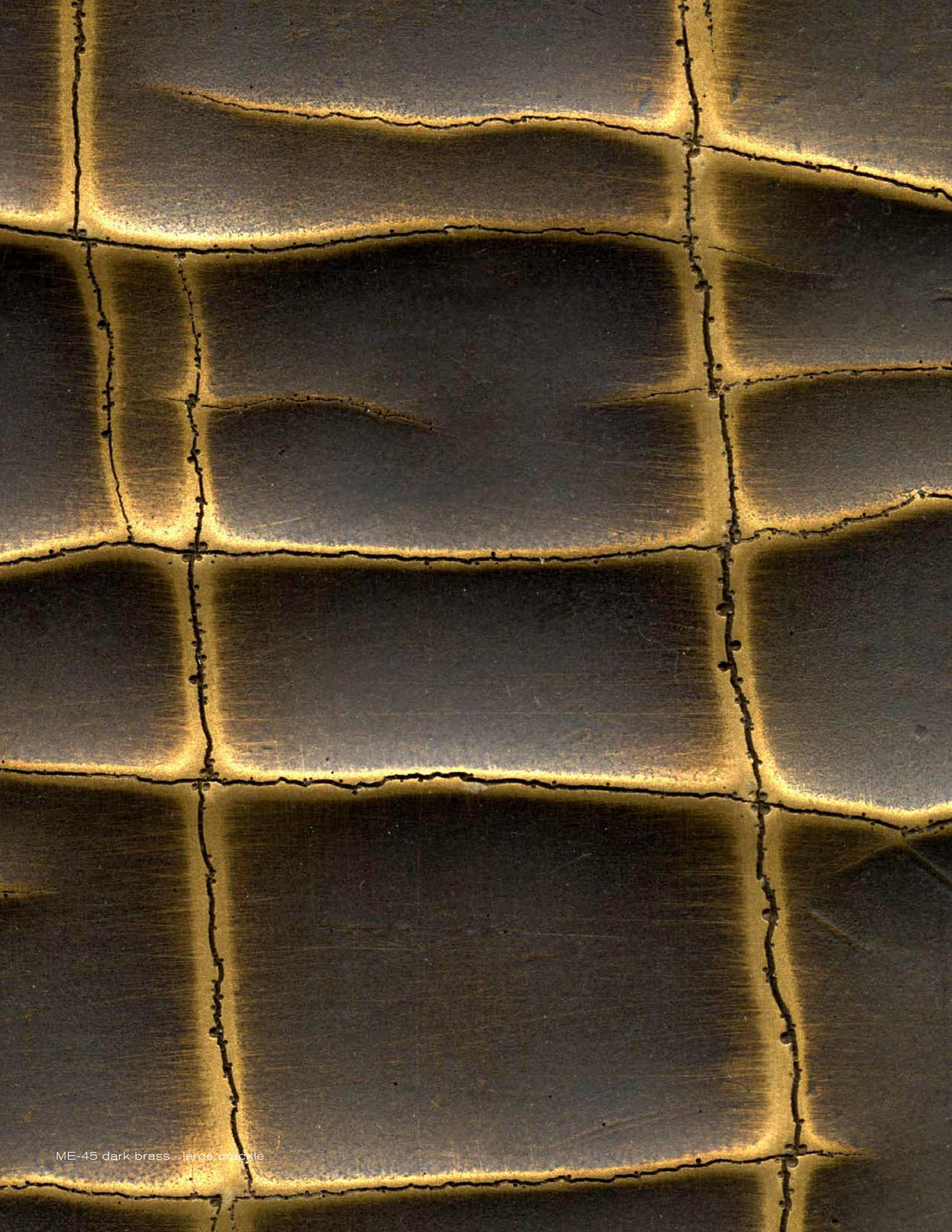


ME-44 antique bronze - rock surface



ME-55 patinated bronze - rock surface





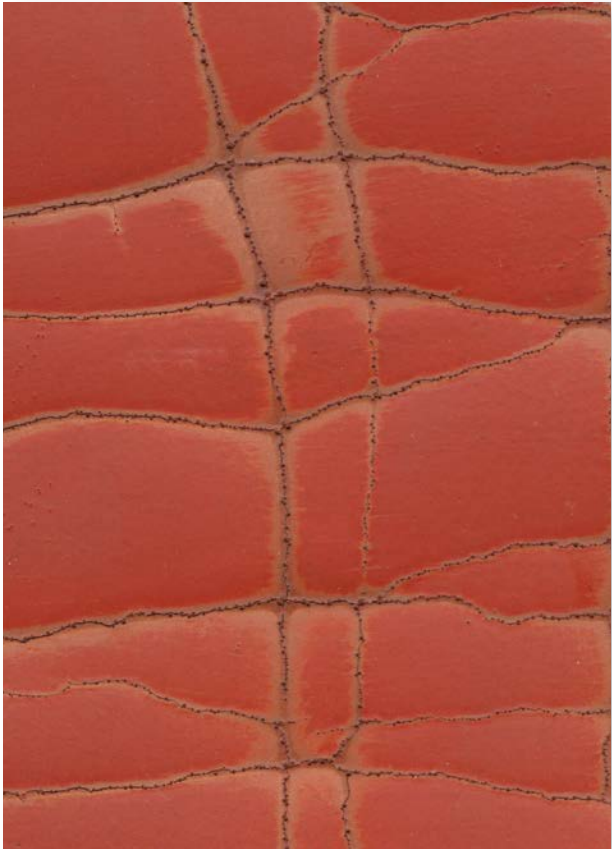
ME-45 dark brass - large crackle



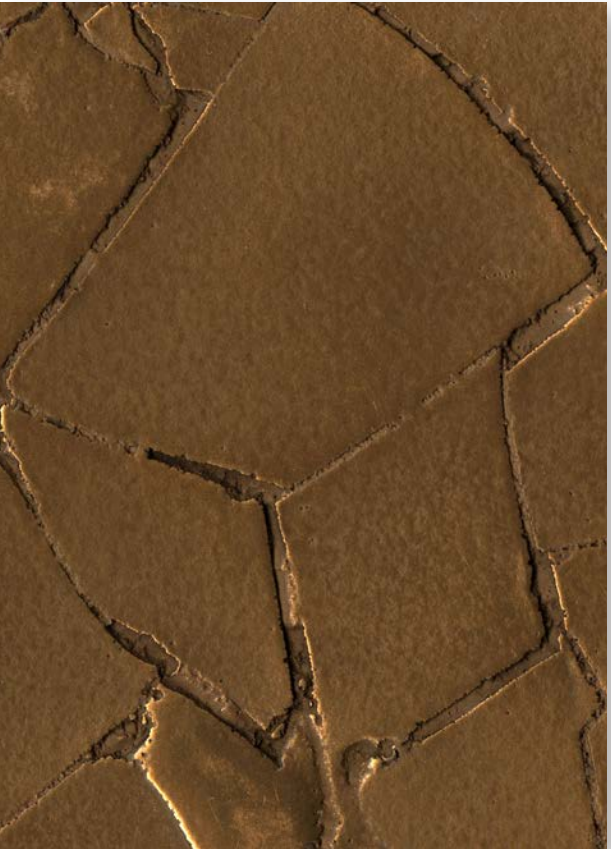
ME-54 patinaed bronze - large crackle



ME-49 antique bronze - large crackle

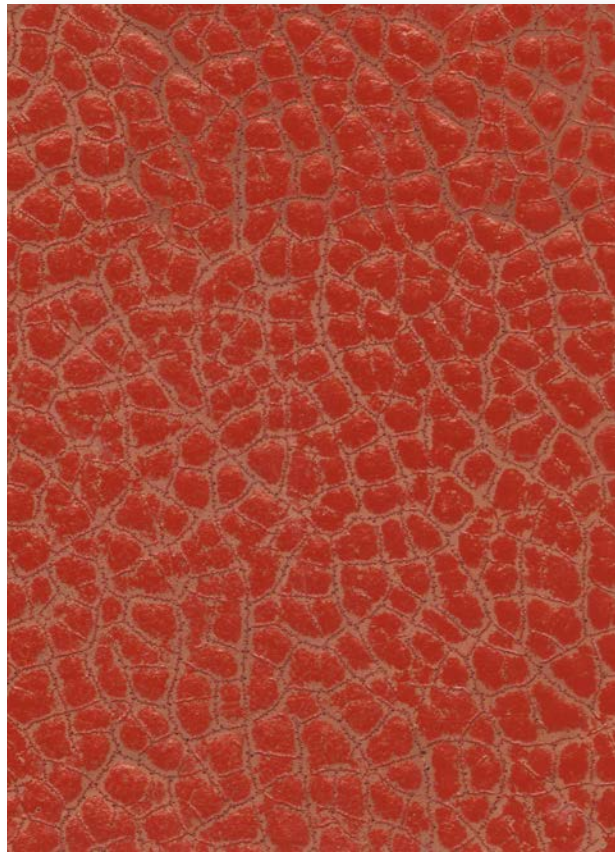


ME-60 copper - red - large crackle



ME-31 bronze - large crackle





ME-59 copper - red - crackle



ME-61 micro-ceramic - white - crackle

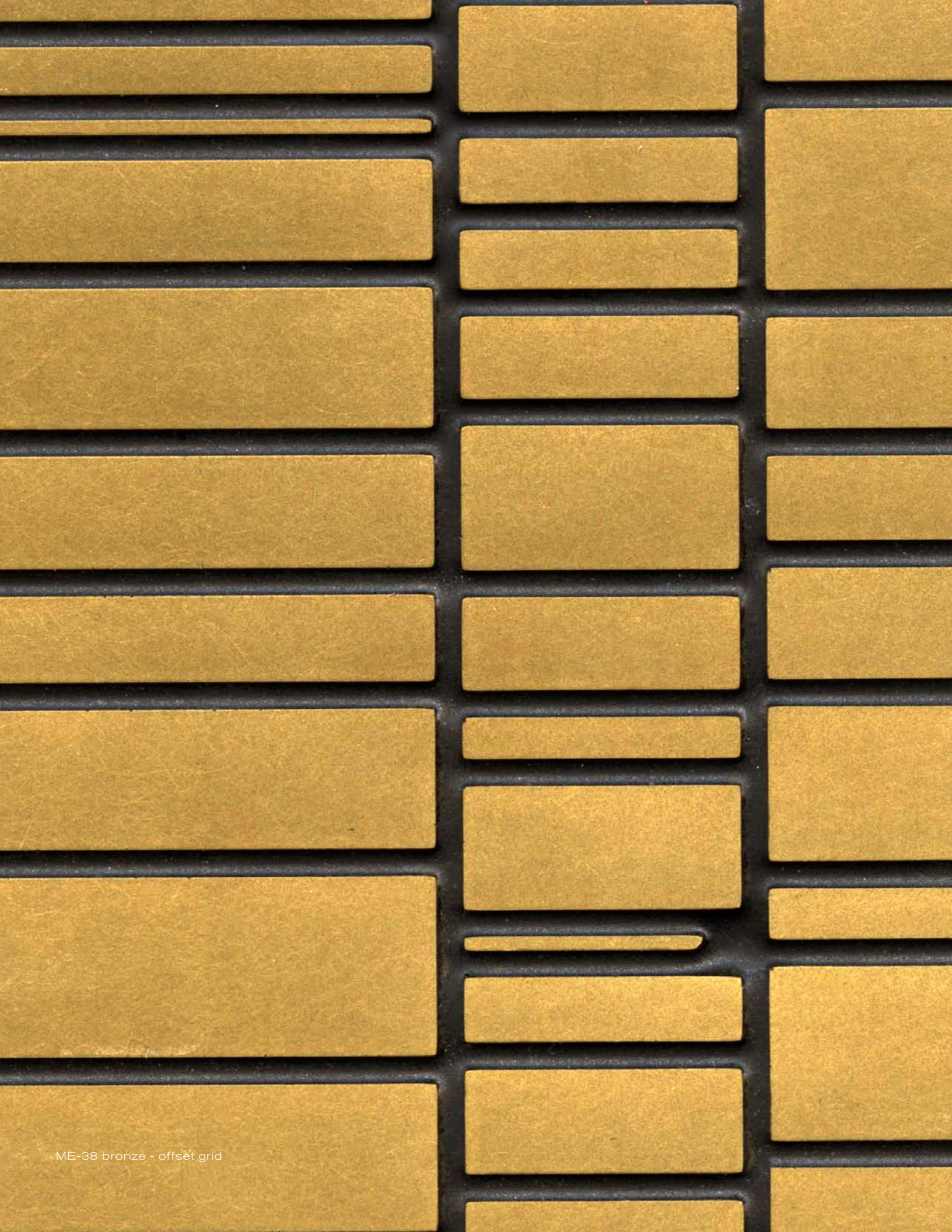


ME-52 white bronze - gun metal grey - crackle



ME-58 bronze - green - crackle

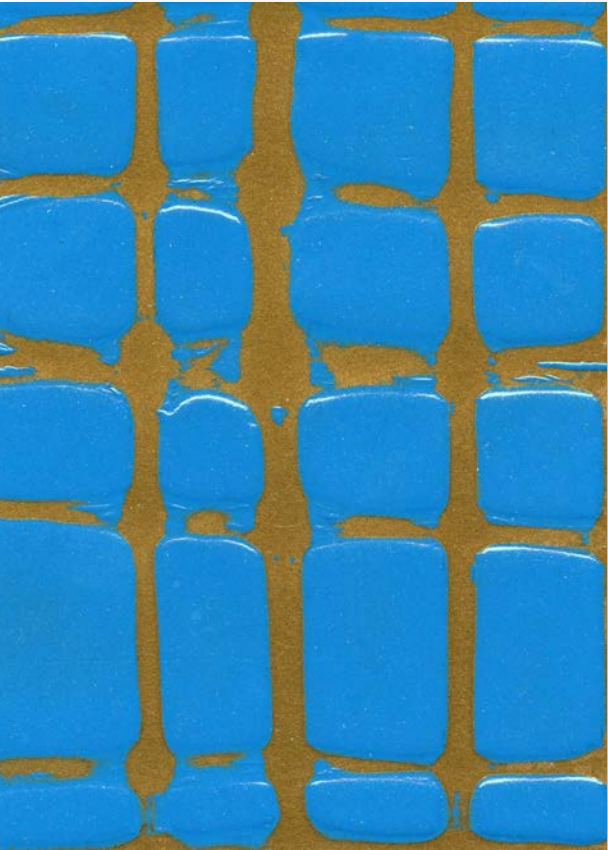




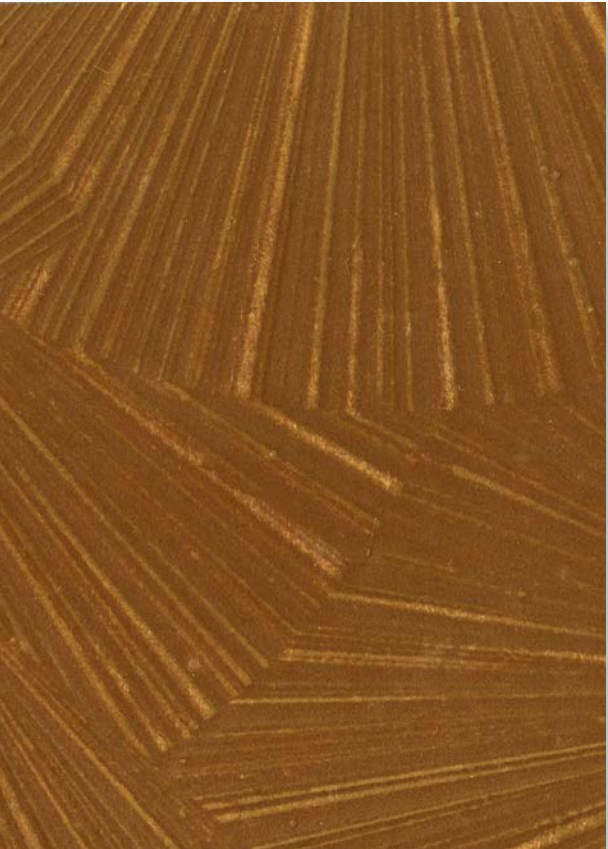
ME-38 bronze - offset grid



ME-33 bronze - organic grid



ME-57 brass - electric blue - grid



ME-36 bronze - organic radial





[www.ericbrand.com](http://www.ericbrand.com)

Photographs and designs pictured herein copyright © 1996 - 2025 Eric Brand.  
All rights reserved. The only authorized source of this design is Eric Brand.  
+1.650.259.0207 / [info@ericbrand.com](mailto:info@ericbrand.com)

